



**IIFL**  
Property Solutions

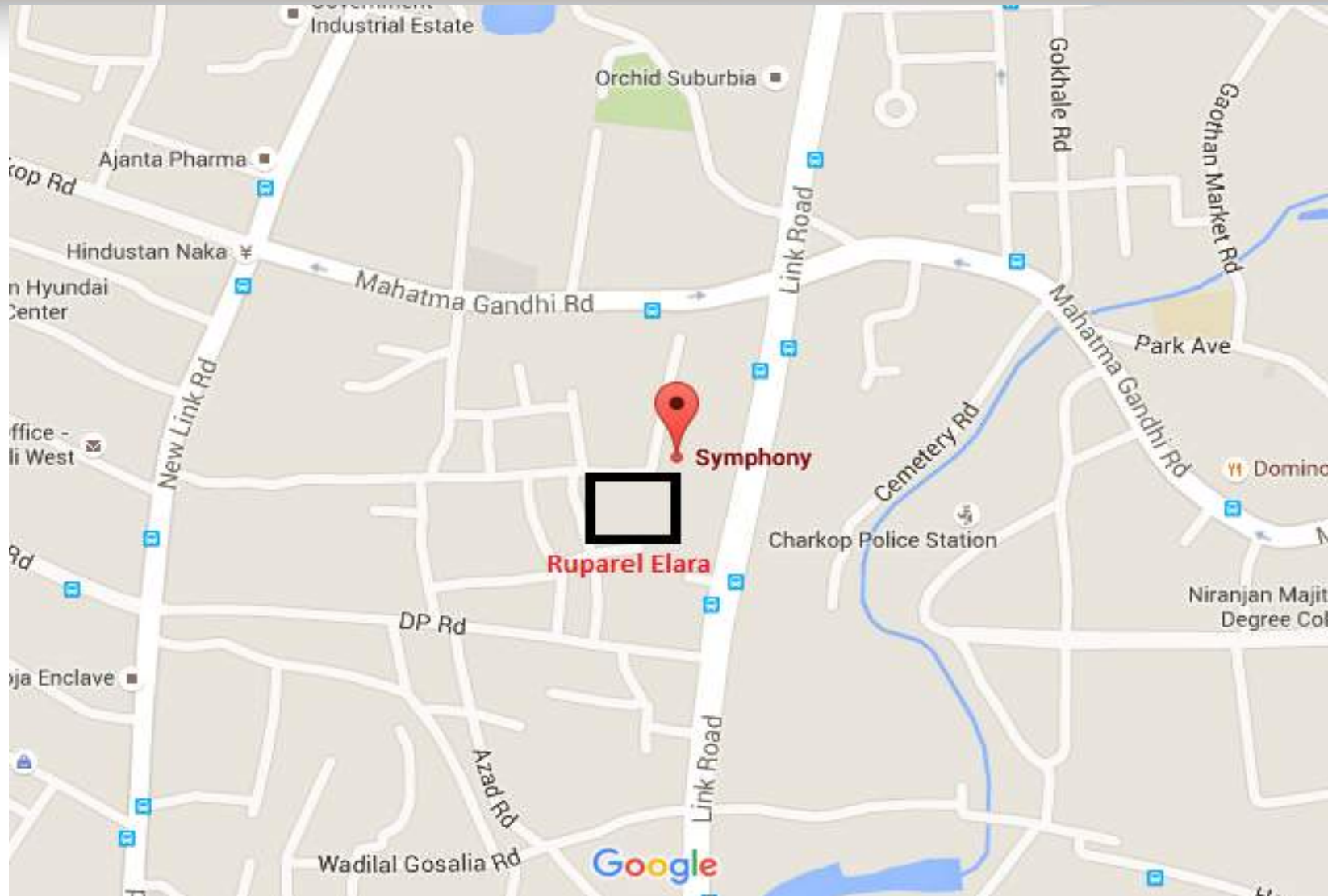
**Ruparel - Elara  
Kandivali**

---

# Project : Ruparel Elara-Phase II



# Location Plan



# Connectivity



- Adjacent to link road
- Kandivali Railway station -.10 mins drive.
- Commercial Business District (CBD) Malad – 5 Mins drive.
- Western Express Highway – 15 mins drive.
- Jain Derasar -.10 mins drive.
- International Airport – 35 mins drive.
- Proposed Metro Station ( Charkop – Mankhurd Metro ) - 2 Mins Drive.
- Proposed Kandivali – Haji Ali sea link – 5 Mins drive.

# Unit Configuration



Area configuration :

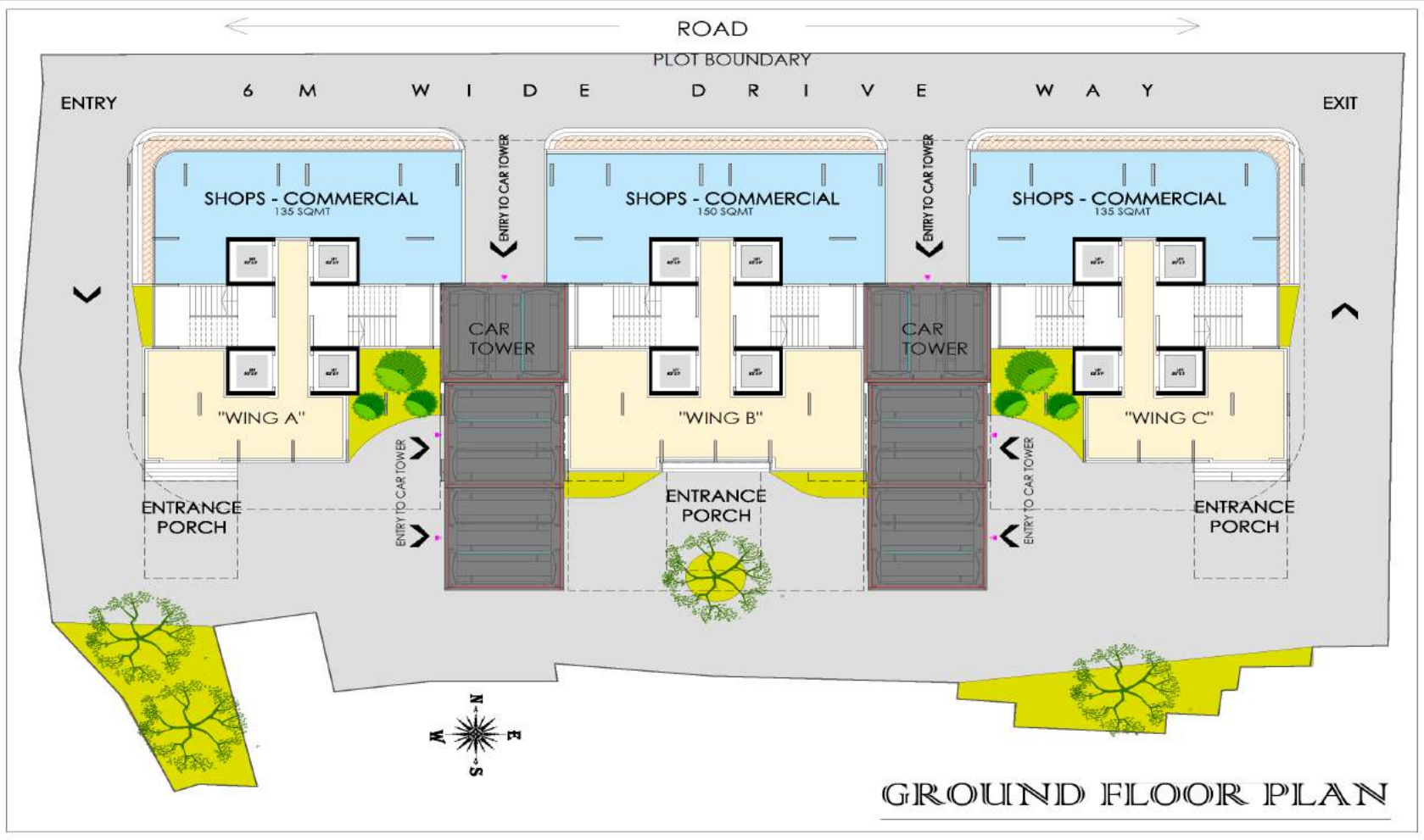
Rate Rs 9200 per sq.ft for 30 inventories only.

Configuration	Saleable Area	Base Rate	Floor Rise	Car Park
1 BHK	685	9200	Rs 50 from 1st Floor	500000
2 BHK	820	9200	Rs 50 from 1st Floor	500000

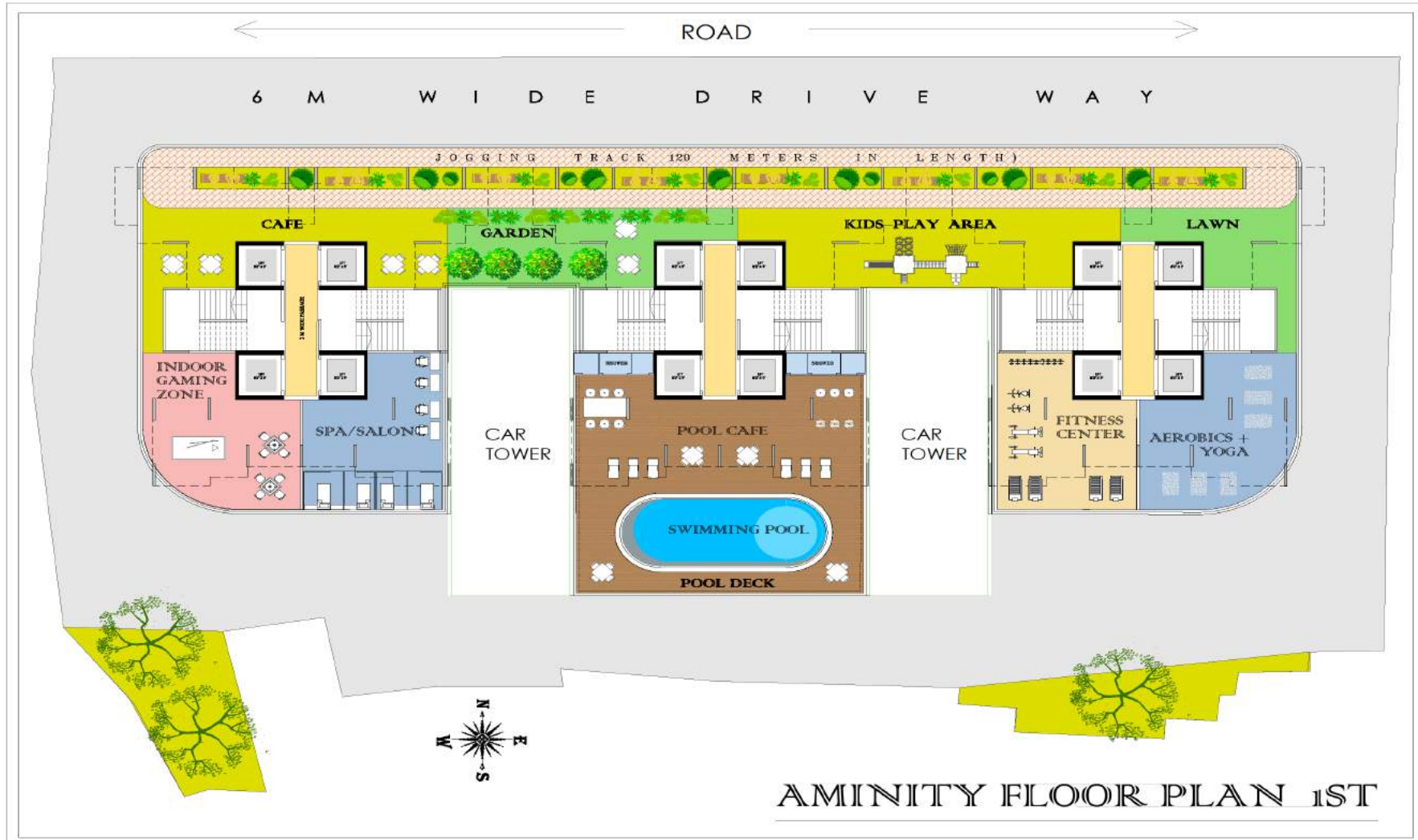
Rate will be revised to Rs 9500 per sq.ft from 16th February onwards.

Soft Launch on Gudi Padwa @ Rs 9750 per sq.ft .

# Ground Floor Plan

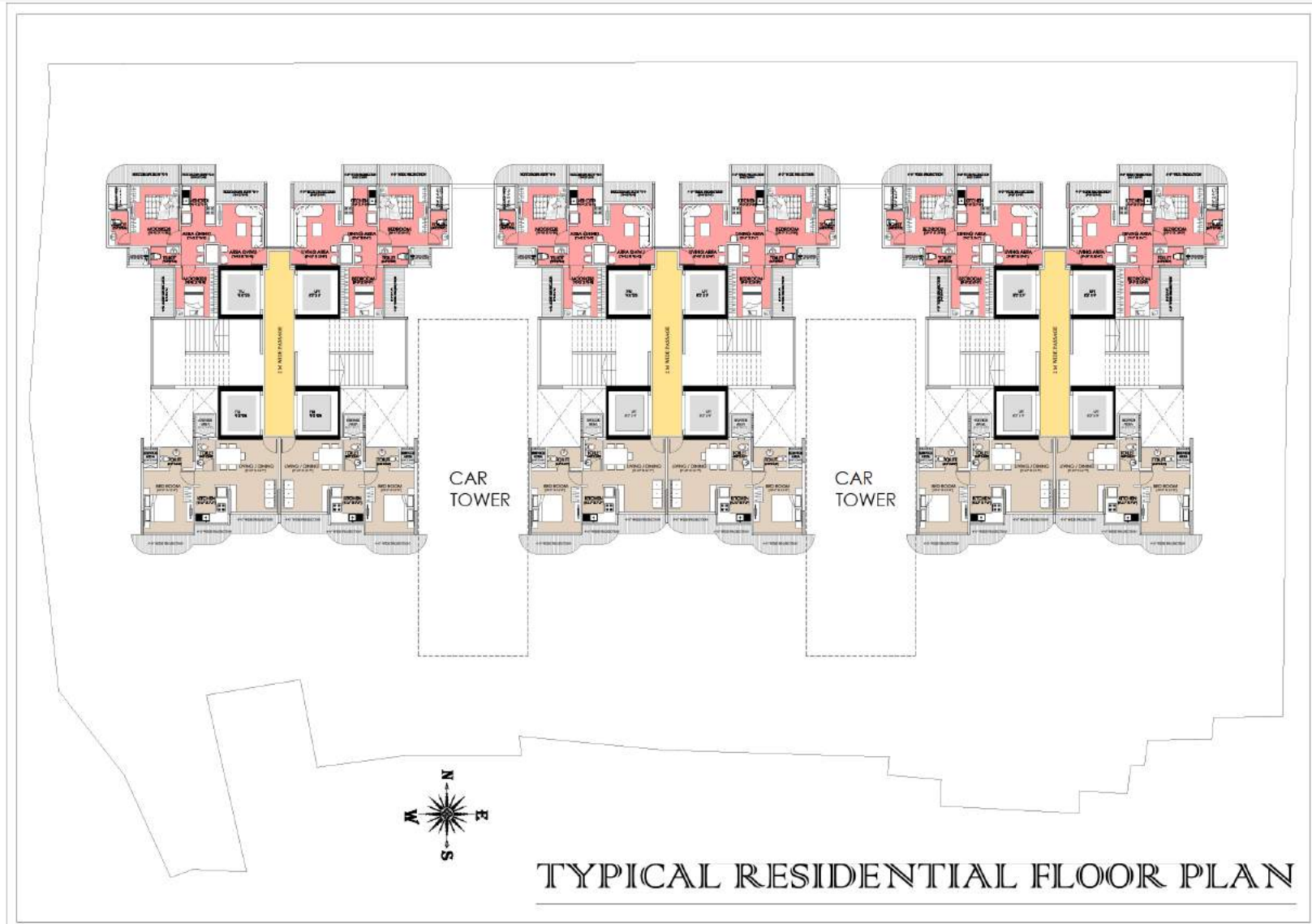


# Amenity Floor Plan



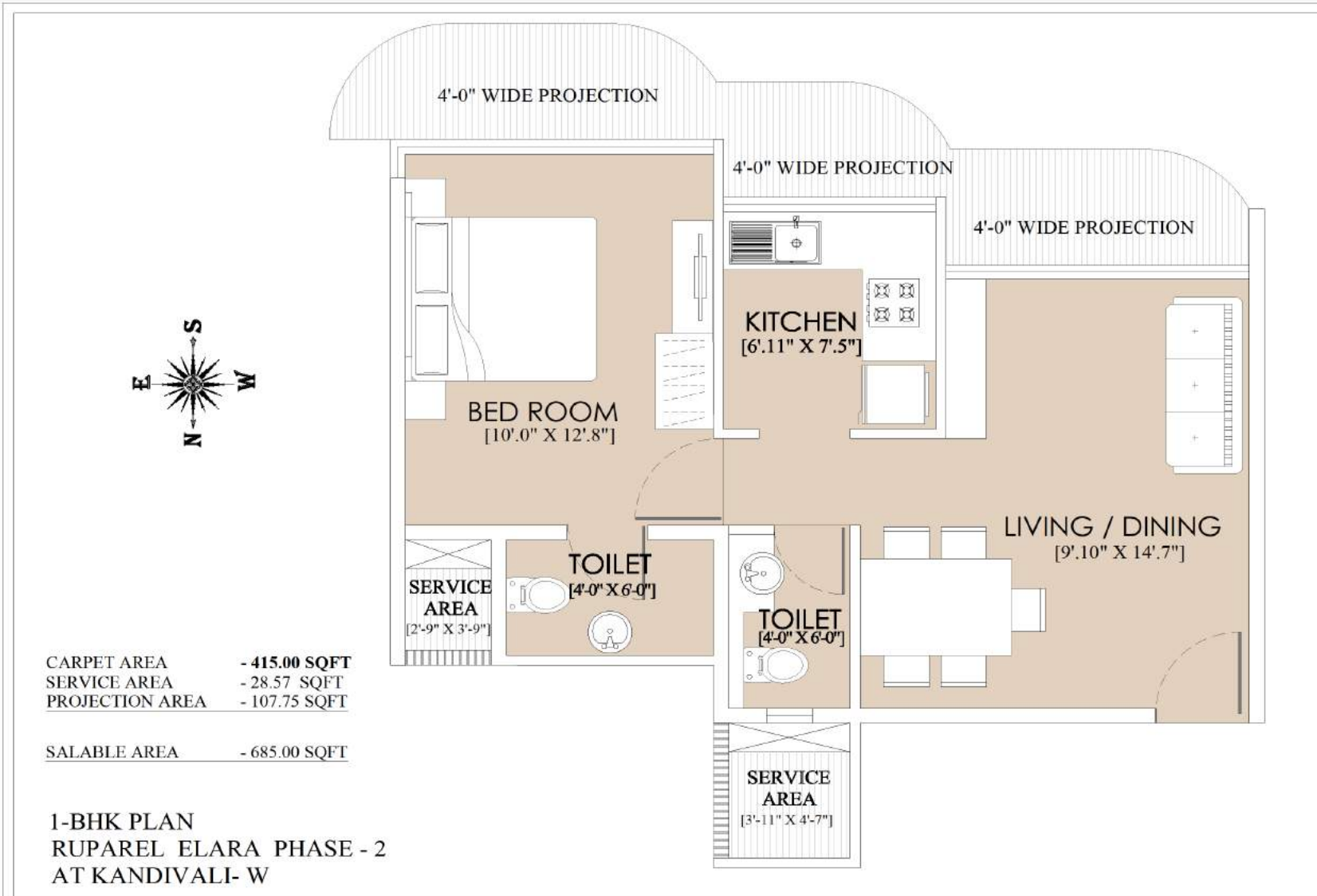
AMINITY FLOOR PLAN 1ST

# Floor Plan

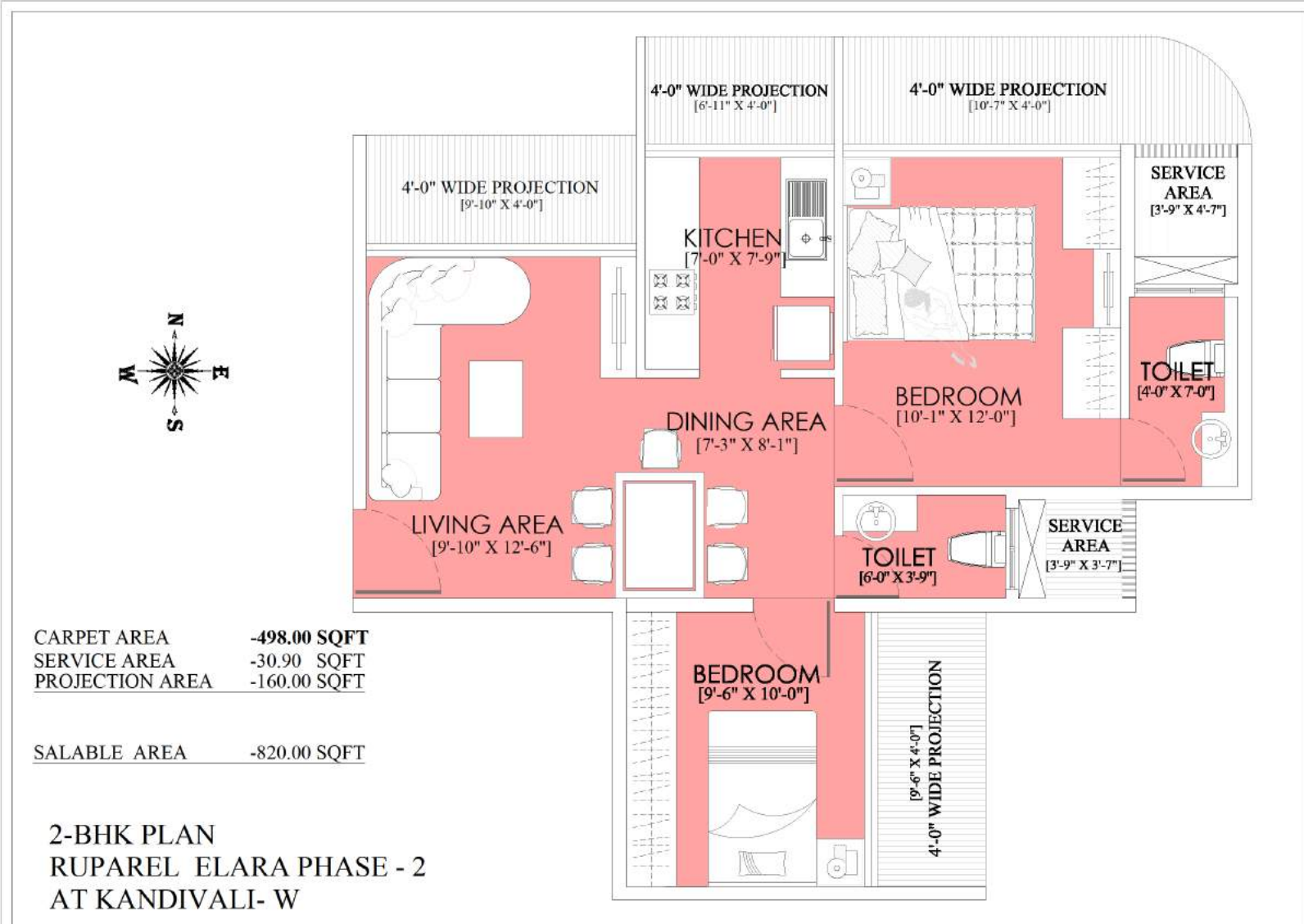




# Unit plan – 1 BHK



# Unit plan – 2 BHK



CARPET AREA -498.00 SQFT  
SERVICE AREA -30.90 SQFT  
PROJECTION AREA -160.00 SQFT

SALABLE AREA -820.00 SQFT

2-BHK PLAN  
RUPAREL ELARA PHASE - 2  
AT KANDIVALI- W

Published in April 2012 © India Infoline Ltd 2011- 2012.

India Infoline Ltd. All rights reserved. Regd. Off: India Infoline Ltd., IIFL Centre, Kamla City, Senapati Bapat Marg, Lower Parel (W) Mumbai-400 013.  
Tel.: +(91 22)4060 9000 Fax: +(91 22) 4060 9049.

This report is for information purposes only and does not construe to be any investment, legal or taxation advice. It is not intended as an offer or solicitation for the purchase and sale of any financial instrument. Any action taken by you on the basis of the information contained herein is your responsibility alone and India Infoline Ltd (hereinafter referred as IIL) and its subsidiaries or its employees or directors, associates will not be liable in any manner for the consequences of such action taken by you. We have exercised due diligence in checking the correctness and authenticity of the information contained herein, but do not represent that it is accurate or complete. IIL or any of its subsidiaries or associates or employees shall not be in any way responsible for any loss or damage that may arise to any person from any inadvertent error in the information contained in this publication. The recipients of this report should rely on their own investigations. IIL and/or its subsidiaries and/or directors, employees or associates may have interests or positions, financial or otherwise in the securities mentioned in this report.